



# The Brick School News

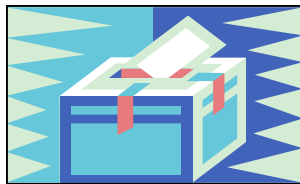
SAU 39  
1 School Street  
Amherst, NH 03031



January 2010

**SUPERINTENDENT'S OFFICE**

## BUDGET SEASON NEWS



Both Souhegan and Amherst School Districts held their public hearings on the FY11 budgets on Wednesday, January 13, 2010. The budget increases are 2.48% and 0.67% respectively. Please support Souhegan and Amherst by attending the deliberative sessions on February 2 (Souhegan) and February 4 (Amherst) both at 7 pm at Souhegan High School in the Auditorium. Voting will be on March 9, 2010.

Because Mont Vernon School District is not an SB2 district, their schedule is approximately a month later than the other two districts. Their budget has not yet been finalized and the Mont Vernon School District public hearing will be held at the Village School on February 11 at 7 pm. Please support Mont Vernon by attending the public hearing in February, as well as the school district annual meeting on Friday, March 12, at 7 pm in the multi-purpose room at the Village School. Voting for school board members and officers will be on March 9, 2010.

## Faculty Feature:



### Meet Lisa Kent from Souhegan High School

## IMPORTANT ANNOUNCEMENTS

### *FROM HUMAN RESOURCES:*

#### **Important Prescription Plan Changes...**

LGC (Local Government Center) recently sent all medical subscribers important information regarding the prescription changes for January 1, 2010. The information packet sent to subscribers did not look like anything of much importance so my concern is that many of you may have thrown it away or did not notice what the changes to the prescription plan include.

These changes have been implemented at the LGC level and were not optional for the Districts.

**Please read Page 1 of the attached Benefits Bulletin** which highlights the changes to the prescription plan [LGC Prescription Changes for 2010](#). In essence:

1. Subscribers will be required to use the [Mail Order Program](#) for maintenance prescriptions (versus using the retail pharmacy to fill maintenance prescriptions on a monthly basis). You will pay for 1 month and receive 3 months worth of prescriptions (buy 1 and get 2 months of prescriptions free) and they ship it to you for free. The cost savings to the employee is 2 months of the cost of the prescription. Subscribers can go online and check the box to have the prescription automatically sent every 90 days. Employees will no longer be allowed to fill maintenance prescriptions (those typically taken on a daily or regular basis) at the retail pharmacy. Please call your physician to request a new 90 day prescription plus refills for the upcoming year.
2. [Generic Equivalent Program](#) is designed to have subscribers use the generic equivalent when it is available versus the more expensive name brand. If a subscriber chooses to fill the name brand versus the generic they will be required to pay the generic co-pay plus the cost difference between the name brand and the generic. As always, if a prescription is written specifically as Dispensed As Written by the physician you would pay the cost of the name brand co-pay.

3. [Specialty Drug Program](#) provides personalized service, education and support for subscribers who are taking the Tier III or Specialty-level prescription drugs.

If you have any questions regarding these changes, or how they may impact you and your family personally, please contact LGC at [800-852-3358](tel:800-852-3358).

### **Take 10 Minutes to Get a Healthy Reward!**



It's time to take the [GET HEALTHY Personal Health Analysis Questionnaire](#) (PHA)... do so by March 31st and reap healthy rewards! You will receive \$75 for completing the questionnaire online (your spouse can as well if he/she completes the questionnaire – that's a \$150 combined incentive!). Employees and their medically covered spouses (through HealthTrust) are eligible to participate in the Personal Health Analysis (PHA) questionnaire.

Employees and spouses who have their health insurance through LGC were mailed the PHA questionnaire in early January. If you have not received your packet and you have health insurance through LGC please call member services at 800-852-3358.

In addition to the personal wellness report you will have access to **2010's** Health Awareness Reimbursement Program which provides up to \$300 in annual reimbursement for each LGC medically covered family member! Click on the link below for more information on this annual per person reimbursement program:

<http://www.nhlgc.org/LGCWebsite/RiskServices/IndividualMember/healthawarenessprogram.htm>

Click on LGC's [Slice of Life](#) health management program link to see the great benefits this program provides in an effort to help you get and stay healthy.

### **JLMC News...**

The JLMC (Joint Loss Management Committee) is a cross section of employees across all Districts that meet 4 times per year to identify and address safety concerns in each of our buildings. Please read the attached article on [Slips, Trips and Falls](#) and be safe and well this winter. ☺

### **Community Information...**

We received the following letter from Southern New Hampshire Services:

“Southern New Hampshire Services, Inc., the Community action Agency for Hillsborough County, has available funding for those that qualify for the Fuel Assistance Program. We as a community partner would like to make the people that work for SAU 39 aware, as well as the community at large, of this service.

I am providing information on what is available, as well as how one can apply and qualify for Fuel Assistance and alike. Should there be any questions, please do not hesitate to contact our Milford Office (673-0756) for assistance.

At your convenience, I will be glad to discuss this with you or your appointed representative, the intentions of the program. I can be reached in Nashua at 889-3304 x 618.

Thank you for your time and assistance in this matter.”

Sincerely Yours:

Director's Office:

Terry Benhardt  
Outreach Coordinator  
Fuel Assistance Program  
Southern New Hampshire Services, Inc.  
[Tbenhardt@snhs.org](mailto:Tbenhardt@snhs.org)  
Cell 494-1900

## [FUEL ASSISTANCE PROGRAM FLIER](#)

### ***FROM PAYROLL:***



### **W-2 News**

2009 W-2's will be delivered to each school and put into your mail box on Friday, January 22, 2010.

Wages and deductions are based on the whole 2009 calendar year, not your 09-10 contract amount.

Please be sure to review your W-2 for accuracy. If your name, address or social security number is not correct, please contact Kim Fredette in payroll immediately.



### **Payroll Deadline Reminders**

To ensure timely payment, all timesheets must be signed by you and your administrator/supervisor and submitted to payroll the Friday before the pay week.

### ***FROM SPECIAL INSTRUCTIONAL SERVICES:***

#### Special Instructional Services News

The school districts of Amherst, Mont Vernon and Souhegan and the Emergency Management officials of the towns of Amherst and Mont Vernon collaborated with the State

of NH Nashua Regional Emergency Preparedness team in sponsoring an H1N1 vaccination clinic for community members and district staff personnel and their family members. The clinic was held on Saturday, December 19<sup>th</sup> at Souhegan High school and was a great success.

Many community members and Souhegan High School students volunteered their services for the day. It was a huge success for all and approximately 710 people were vaccinated during the 4 hour clinic.

Since December 19<sup>th</sup>, more vaccinations have been made available throughout the State. If you have not received your vaccination and still wish to do so, you can contact your PCP for information. Also, you can check with a local Walgreen Pharmacy to see if they have vaccinations available. A list of public clinics can be found at: <http://www.nh.gov/h1n1/vaccine.htm>

### What is Special Education?

In general, special education means specially designed instruction, at no cost to the parents, to meet the unique needs of a child with a disability, including:

- Instruction conducted in the classroom, in the home, in hospitals and institutions, and in other settings; and
- Instruction in physical education.

Special education includes each of the following, if the services otherwise meet the requirements of the above paragraph.

- Speech-language pathology services, or any other related service, if the service is considered special education rather than a related service under State standards;
- Travel training; and
- Vocational education.

***FROM THE FINANCE/BUSINESS DEPARTMENT:***



The business office and facilities would like to introduce you to Paper Retriever who has arrived at your school. We have been working in conjunction with representatives from each of the schools to put this program in place.

Abitibi Paper Retriever is a division of Abitibi Consolidated which is a global leader in manufacturing and recycling newsprint. The company offers a free program to non profit organizations to use for paper recycling. Distinctive green and yellow Abitibi Paper Retriever bins are provided and everyone is encouraged to bring their paper to the drop off locations. The company then will pay for what is collected. The more paper we collect, the more money we get.

This is the first phase in reducing the overall cost associated with disposal services while helping the environment.

Please stay tuned for further information from your building representatives regarding this program or to learn more log onto [PaperRetriever.com](http://PaperRetriever.com).

We need everyone's help to make this a success!

## REMI NDER!

### IRS Announces 2010 Standard Mileage Rate



Effective January 1, 2010 through June 30, 2010, the mileage rate for reimbursement will be \$0.50 per mile for business miles as established by the IRS.